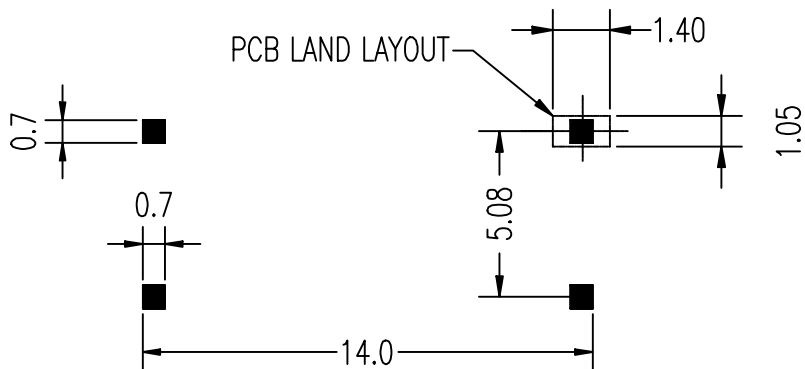


ELECTRICAL CHARACTERISTICS: (TRUE V.34 FOR SMT)

1. DCR PIN 1-3 =  $157\Omega \pm 10\%$  PIN 4-6 =  $146\Omega \pm 10\%$
2. INDUCTANCE (@250Hz, 0.5Vrms, PARALLEL) 1-3 = 3.5H MIN.
3. IMPEDANCE (@ 1KHz, 0dBm, 6-4 W/H 346 $\Omega$ )  
1-3 =  $600\Omega \pm 10\%$
4. INSERTION LOSS =  $2.9 \pm 0.1$ dB  
(AT 1KHz, 0dBm, 1-3 W/H 600 $\Omega$ , 6-4 W/H 346 $\Omega$ )
5. FREQ. RESP. (@ 300Hz TO 4KHz, REF. 1KHz) =  $\pm 0.1$ dB
6. RETURN LOSS(Ref. 600 $\Omega$ , 6-4 W/H 346 $\Omega$ ):  
@300Hz = 25dB MIN. @1KHz = 25dB MIN. @4KHz = 25dB MIN.
- 7 TURN RATIO = (@30KHz, 0.1Vrms)1:1 $\pm 1\%$
8. POLARITY = PIN 1-6 INPHASE
9. LONGITUDINAL BAL. = 70dB MIN. (@ 200Hz TO 4KHz)
10. T.H.D. (@600Hz, -10dBm, INPUT 600 $\Omega$ , 6-4 W/H 346 $\Omega$ )  
= -82dB MAX.
11. HI-POT = 1250 VAC, 1mA, 2SEC. (PRI.-SEC.)
12. INSULATION RESISTANCE : (@500VDC)  
PRI.-SEC. = 100M  $\Omega$  MIN.
13. RoHS COMPLIANT



UNLESS OTHERWISE SPECIFIED ALL TOLERANCES ARE  $\pm 0.25$

TITLE: 600:346  
TRANSFORMER

PART NO.:  
WHTT40013

REMARK:

SIZE  
A4

SACLE  
1:1

SHEET  
1/1

GENERAL TOLERANCES  
UNLESS SPECIFIED

$x \pm 0.35$	$x^\circ \pm 3.0^\circ$
$.x \pm 0.30$	$.x^\circ \pm 2.0^\circ$
$.xx \pm 0.25$	$.xx^\circ \pm 1.5^\circ$
$.xxx \pm 0.10$	$.xxx^\circ \pm 1.0^\circ$

APPROVED BY:  
Geoffrey.Song

CHECKED BY:  
Elvis.Song

DESIGND BY:  
Sunny.Xu

**VOOHU** 苏州沃虎电子科技有限公司  
Su Zhou Voohu Electronic Tech.Co.Ltd

TEL: +86 400 1048 018

WEB: [WWW.WOHU-TEK.COM](http://WWW.WOHU-TEK.COM)

